

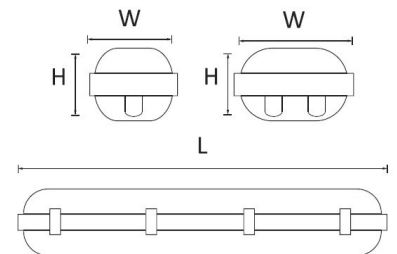


SPECIFICATION

- HOUSING : ○ POLYCARBONATE (PC)
- DIFFUSER : ○ POLYCARBONATE (PC)
- REFLECTOR : ○ MIRROR ANODIZED ALUMINIUM REFLECTOR 87% *
○ MIRROR ANODIZED ALUMINIUM REFLECTOR 95% *
- LAMPHOLDER : ○ G13 AND G5 ROTARY SPRING-LOCKED HIGH HEAT RESISTANCE POLYCARBONATE BODY
○ G13 SPRING LOAD LOCKED HIGH HEAT RESISTANT POLYCARBONATE BODY *
- WIRES : ○ THW 0.5 mm² STANDARD (1mm² on request)
- REMARK : * = AVAILABLE ON REQUEST

APPLICATION

FACTORY, OFFICE BUILDING, HOSPITAL, DEPARTMENT STORE,
UNIVERSITY, GOVERNMENT BUILDING, SUPERMARKET,
WAREHOUSE, RESIDENTIAL, SHOWROOM, CANTEEN



INSTALLATION SURFACE MOUNT OR SUSPEND MOUNT

PRODUCT CODE	LAMP HOLDER	LAMP TYPE	WATT [FUL]	WATT [LED]	CUT OUT W X L [mm.]	DIMENSION W X L X H [mm.]
<input type="checkbox"/> 10D-118-PC1	G13	T8	1X18	1X9	N/A	100X666X105
<input type="checkbox"/> 10D-136-PC1	G13	T8	1X36	1X18	N/A	100X1270X105
<input type="checkbox"/> 10D-218-PC1	G13	T8	2X18	2X9	N/A	150X666X105
<input type="checkbox"/> 10D-236-PC1	G13	T8	2X36	2X18	N/A	150X1270X105



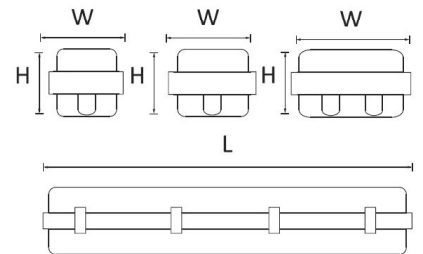
SPECIFICATION

- HOUSING : ○ MADE OF STAINLESS STEEL (SUS 304)
- DIFFUSER : ○ CLEAR ACRYLIC
- CLIPS : ○ STAINLESS STEEL (SUS 304)
- REFLECTOR : ○ MIRROR ANODIZED ALUMINIUM REFLECTOR 87% *
○ MIRROR ANODIZED ALUMINIUM REFLECTOR 95% *
- LAMPHOLDER : ○ G13 AND G5 ROTARY SPRING-LOCKED HIGH HEAT RESISTANCE POLYCARBONATE BODY
- WIRES : ○ THW 0.5 mm2 STANDARD (1mm2 on request)
- REMARK : * = AVAILABLE ON REQUEST



APPLICATION

FACTORY, OFFICE BUILDING, HOSPITAL, DEPARTMENT STORE, UNIVERSITY, GOVERNMENT BUILDING, FACTORY, SUPERMARKET, WAREHOUSE, RESIDENTIAL, SHOWROOM, CANTEEN



INSTALLATION SURFACE MOUNT OR SUSPEND MOUNT

PRODUCT CODE	LAMP HOLDER	LAMP TYPE	WATT [FUL]	WATT [LED]	CUT OUT W X L [mm.]	DIMENSION W X L X H [mm.]
<input type="checkbox"/> 5-118-STA	G13	T8	1X18	1X9	N/A	100X666X105
<input type="checkbox"/> 5-136-STA	G13	T8	1X36	1X18	N/A	100X1270X105
<input type="checkbox"/> 5-236-STA	G13	T8	2X36	2X18	N/A	175X1270X105
<input type="checkbox"/> 5-336-STA	G13	T8	3X36	3X18	N/A	175X1270X105



POLYCARBONATE DIFFUSER



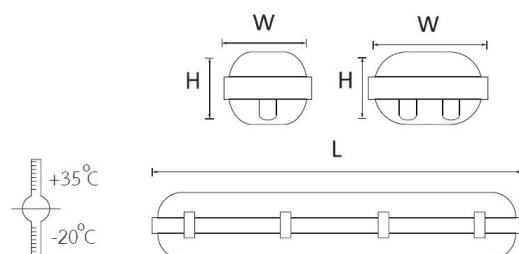
CLEAR ACRYLIC DIFFUSER *

SPECIFICATION

- HOUSING : ○ MADE OF COMPRESSED GLASS FIBER REINFORCED POLYESTER IN GREY (RAL 7035) . POLYURETHANE GASKET.
- DIFFUSER : ○ POLYCARBONATE
○ CLEAR ACRYLIC *
- CLIPLOCKS ○ PLASTIC
○ STAINLESS STEEL *
- REFLECTOR : ○ MIRROR ANODIZED ALUMINIUM REFLECTOR 87% *
○ MIRROR ANODIZED ALUMINIUM REFLECTOR 95% *
- LAMPHOLDER : ○ G13 AND G5 ROTARY SPRING-LOCKED HIGH HEAT RESISTANCE POLYCARBONATE BODY
○ G13 SPRING LOAD LOCKED HIGH HEAT RESISTANT POLYCARBONATE BODY *
- WIRES : ○ THW 0.5 mm² STANDARD (1mm² on request)
- REMARK : * = AVAILABLE ON REQUEST

APPLICATION

FACTORY, OFFICE BUILDING, HOSPITAL, DEPARTMENT STORE, UNIVERSITY, GOVERNMENT BUILDING, FACTORY, SUPERMARKET, WAREHOUSE, RESIDENTIAL, SHOWROOM, CANTEEN



INSTALLATION SURFACE MOUNT OR SUSPEND MOUNT

PRODUCT CODE	LAMP HOLDER	LAMP TYPE	WATT [FUL]	WATT [LED]	CUT OUT W X L [mm.]	DIMENSION W X L X H [mm.]
<input type="checkbox"/> 5-118S -ZAP	G13	T8	1X18	1X9	N/A	100X666X108
<input type="checkbox"/> 5-136S -ZAP	G13	T8	1X36	1X18	N/A	100X1276X108
<input type="checkbox"/> 5-218 -ZAP	G13	T8	2X18	2X9	N/A	170X666X108
<input type="checkbox"/> 5-236 -ZAP	G13	T8	2X36	2X18	N/A	170X1276X108

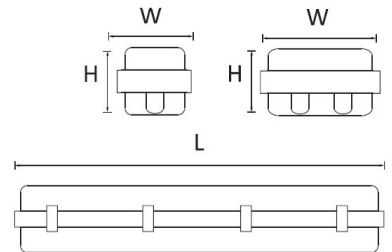


SPECIFICATION

- HOUSING : ○ MADE OF COLD-ROLLED STEEL SHEET
SIX-STAGES ZINC-PHOSPHATE AND ANTI-RUST
FINISHED WITH POLYESTER POWDER COAT
- DIFFUSER : ○ CLEAR ACRYLIC
- CLIPS : ○ STAINLESS STEEL (SUS 304)
- REFLECTOR : ○ MIRROR ANODIZED ALUMINIUM REFLECTOR 87% *
○ MIRROR ANODIZED ALUMINIUM REFLECTOR 95% *
- LAMPHOLDER : ○ G13 AND G5 ROTARY SPRING-LOCKED HIGH HEAT
RESISTANCE POLYCARBONATE BODY
○ G13 SPRING LOAD LOCKED HIGH HEAT RESISTANT
POLYCARBONATE BODY *
- WIRES : ○ THW 0.5 mm² STANDARD (1mm² on request)
- REMARK : * = AVAILABLE ON REQUEST

APPLICATION

FACTORY, OFFICE BUILDING, HOSPITAL, DEPARTMENT STORE,
UNIVERSITY, GOVERNMENT BUILDING, SUPERMARKET,
WAREHOUSE, RESIDENTIAL, SHOWROOM, CANTEEN



INSTALLATION SURFACE MOUNT OR SUSPEND MOUNT

PRODUCT CODE	LAMP HOLDER	LAMP TYPE	WATT [FUL]	WATT [LED]	CUT OUT W X L [mm.]	DIMENSION W X L X H [mm.]
<input type="checkbox"/> 5-118S-SHA	G13	T8	1X18	1X9	N/A	100X666X105
<input type="checkbox"/> 5-218-SHA	G13	T8	2X18	2X9	N/A	175X666X105
<input type="checkbox"/> 5-136S-SHA	G13	T8	1X36	1X18	N/A	100X1270X105
<input type="checkbox"/> 5-236-SHA	G13	T8	2X36	2X18	N/A	175X1270X105